

JRCJames Ross Collection
WeAr the Future

James Ross Collection

SCHEMA TECNICA

JRCJames Ross Collection
WeAr the Future

Pantalone Libano Lady

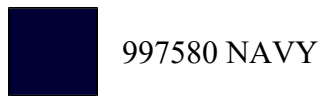
**Pantalone multitasche elasticizzato**

- Tessuto principale in 65% poliestere - 33% cotone - 2% elasthan
- Tessuto antiabrasione elasticizzato 92% poliestere - 8% elasthan sulle ginocchia con impunture in contrasto
- Triple cuciture
- Due tasche anteriori con zip con nastratura rifrangente
- Una tasca laterale con zip
- Una tasca posteriore aperta
- Una tasca posteriore con zip con nastratura rifrangente
- Doppia tasca laterale portautensili o portametro
- Gancio portamartello
- Elastici in vita sui fianchi e passanti maggiorati
- Gancio portachiavi o portabadge in pvc
- Bottone automatico in vita coperto

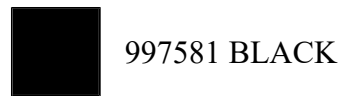
N.B. Si prega di lavare il capo prima di indossarlo la prima volta per conservarne la qualità nel tempo

CORRISPONDENZA TG.: S 38/40, M 42, L 44/46, XL 48/50

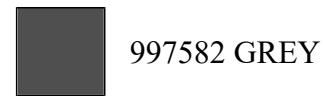
S - M - L - XL

Colori e codici articolo:

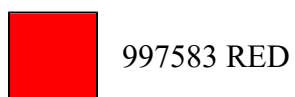
997580 NAVY



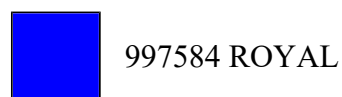
997581 BLACK



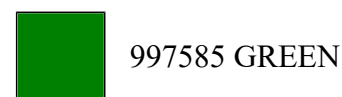
997582 GREY



997583 RED



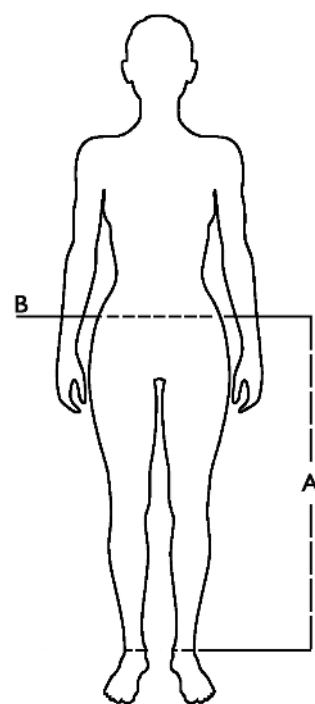
997584 ROYAL






997585 GREEN

Tabella misure

Sizes (+/- 5%)	A front lenght	B waist
S 38/40	100	35,5
M 42	102	38
L 44/46	104	41
XL 48/50	106	44

**Descrizione tecnica**

	Composizione / Fabric Composit	 g/m ²
Tessuto esterno/Shell	65% poliestere - 33% cotone - 2% elasthan	260
Imballo/Packages	 30 pcs	
Istruzioni di Lavaggio / Care Label		

Rapporto di Prova

Effettuato da Ritex divisione Ecochem spa N. 23RT03026 del 13.09.23

Cat. DPI/PPE category I Norme **CE** e livelli di protezione/EC standards and protection levels EN ISO 13688:2013